

Tarentatom

A 1 & 2

TARENTATOM V1 (ST ETIENNE)

♩. = 130

Measures 1-8 of section A 1 & 2. The music is in 12/8 time, key of B-flat major. It features a repeating eighth-note pattern in the right hand and a more complex bass line in the left hand. A *mf* dynamic marking is present at measure 2.

B 1 & 2

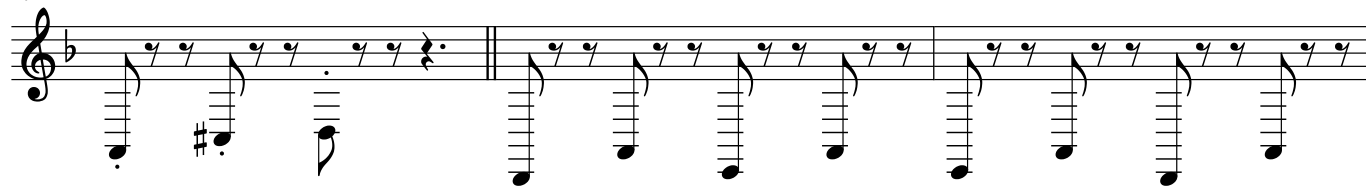
Measures 9-14 of section B 1 & 2. The music continues with the eighth-note pattern, but the left hand has more complex rhythmic figures, including some beamed eighth notes and rests.

C 1 & 2

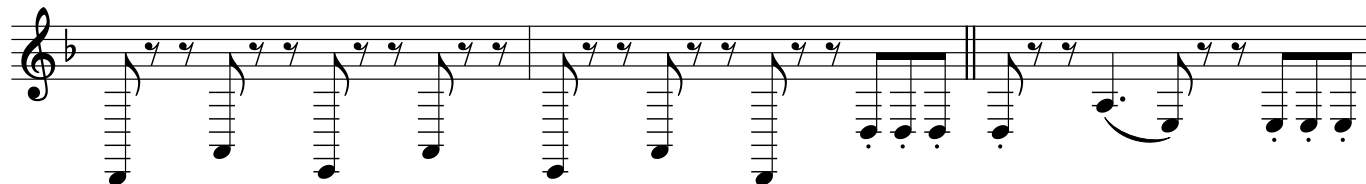
Measures 15-22 of section C 1 & 2. This section continues the eighth-note pattern with further variations in the bass line, including some triplets and more complex rhythmic groupings.

D 2 & 3

24



27



30



D.C.